



Marie Woodward
Safeguarding Lead
for Pier Training
07880 198003



PIER TRAINING SAFEGUARDING NEWSLETTER



Who's in Charge?

A new video campaign by Birmingham Safeguarding Children Partnership (BSCP) has been launched in response to increasing concerns that growing numbers of babies and children are at risk of serious harm because of the way some parents and carers consume alcohol at home.

A potentially life-saving, question – ‘when you drink, who’s in charge?’

The campaign urges parents, and others with responsibility for children, to be aware of a range of potentially dangerous consequences of drinking alcohol while caring for children.

Did you know?

In the four year period ending in March 2020, 35 babies in the West Midlands region died while sharing beds or sofas with adults who had consumed more than two units of alcohol.



Watch this short clip on BBC Bitesize by Psychologist Honey Lancaster-James to find out more...

GASLIGHTING

How to spot it and stop it

Gaslighting: “the action or process of manipulating a person by psychological means into questioning his or her own sanity”

– Oxford English Dictionary

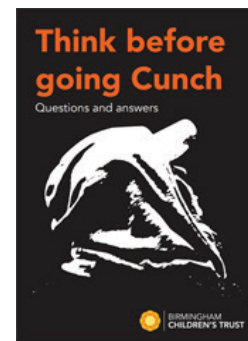
Gaslighting is a form of manipulation that occurs in abusive relationships. It is a type of emotional abuse where the bully or abuser makes the target question their judgments, memory and reality. In a domestic relationship it is a manipulation tactic used to gain power and can amount to coercive and controlling behaviour. It is a highly effective form of emotional domestic abuse.

We would like to welcome back Marie Woodward our Designated Safeguarding Officer.



Events in June:

Our safeguarding officer will be attending the BSCP annual conference this month to keep updated on the latest information regarding Safeguarding.



Have you heard of ‘Cunch’?

According to the Urban Dictionary Cunch means countryside, a place where drug dealers usually go to sell class A drugs away from the police and public.

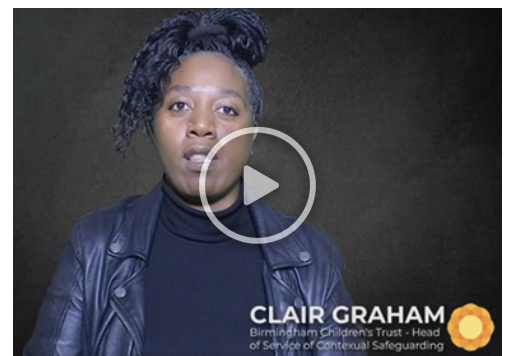
County Lines is a form of Child Criminal Exploitation (CCE) where gangs and organised crime networks

will exploit children and use them to transport drugs. Perpetrators will use dedicated mobile phone 'Lines' to manage their criminal activity, taking place between different towns and cities.

Click image to find out more and to download document.

Understanding Parents/Carers Anxieties around County Lines

(Birmingham Children's Trust 2021)



CLAIR GRAHAM
Birmingham Children's Trust - Head
of Service of Contextual Safeguarding